

CHECKIN LOVES THE LADE



Over the last three years many of the CheckIn jobseekers have used the Lade, the historical city-centre pathway through Perth to reach the Ladeside-based training centre, garden centre and café - and during this time many of them have sadly also seen the litter and graffiti increase.

So when CheckIn was successful in winning Tesco's *Bags of Help* bag fund for community groundwork improvements, staff and volunteers were delighted to lend a hand to change this trend with a planned upgraded stretch to be called the **Meadow Walk and Bee Bar**.

The aim is to focus on the stretch from Highland House to Crieff Road and increase the wildlife and improve further stretches later over the winter months. There will be new planting areas to attract bees, mini orchard, planters and trellis for climbing plants and panels for new community art.

CheckIn Manager, Anthea Coulter explains, "We are delighted to be working on this fantastic project now and to turn this beautiful, old walkway which is an asset to the city into a special place for local people and increase the wildlife in Perth so it can be enjoyed for a long time to come."

The CheckIn team are now wanting local people living on the Lade, local groups and schools to get involved too and are holding an open information evening event on **Tuesday 12th April from 4-6pm at the People's Farm Food Market next to Raad's Garage behind The Range**.

New Chef brings fresh flavours to the Ladeside Cafe



The small seasonal café based at the garden centre on the Lade is delighted to welcome a new chef for the summer, **Chris Smith**.

Chris is excited in bringing delicious new vegetarian dishes and specials to the café and using as much local produce and freshly-produced vegetables and herbs from our community gardens.

The café and small kitchen provides a vital training venue for new jobseekers before they move on to the busier venues so supporting this café helps the journey back to work for many jobseekers too.

Open:
Mon-Friday 9.30-4.30pm
Saturday 9.30-1.30pm.

GREAT PERTSHIRE PICNIC

Giraffe coordinates new Perthshire food and drink festival for September 2016

Last October, Anthea Coulter Manager of CheckIn Works ran her first marathon in the beautiful city of Bath and took part in a number of events that were being held as part of a month-long food and drink festival which had been running for eight years. As she sat and enjoyed the delights of a Bath Bun, she reflected that the same type of event would work well in Perthshire and that it would enable the charity to engage with more employers in the area and encourage them to employ or provide work experience to people with barriers to work.

After talking to a number of suppliers and food producers, who responded well to the idea, Giraffe were delighted to then receive funding from the Community Food Fund to support the first year of the Great Perthshire Picnic which will be running in September 2016.

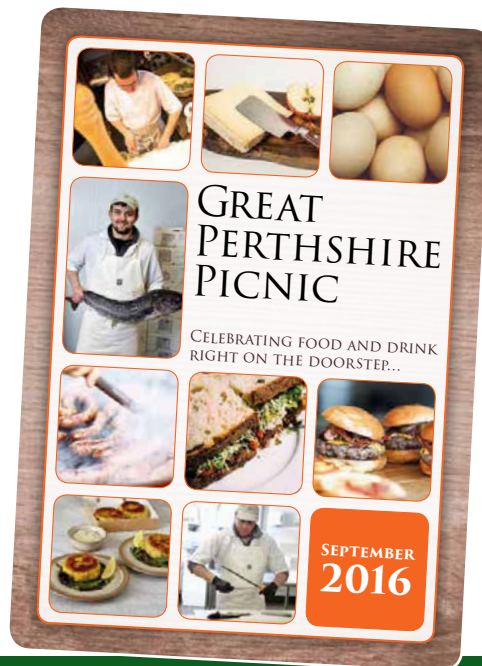
Giraffe will be encouraging all local food suppliers, restaurants and farm shops to get involved

and come up with one event to advertise collectively together to raise the profile of the amazing wealth of food and drink on offer in the county.

The website is now live!

www.greatperthshirepicnic.uk

For more information or a chat, please contact **Anthea** or **Alan** to learn more on 01738 633887.



New Recycling Unit raises money for the Charity



Now based at the Ladeside, it couldn't be easier to help our work - by bringing your old wearable clothes and shoes along. All money raised will go towards jobseeker social events.

Charity Golf Match @ Glenalmond College

Sunday 8th May - play starts 10.30pm

Keen local golfers are invited to take part in the first CheckIn-Giraffe Golf Match at the delightful and scenic golf course based at Glenalmond College to the west of Perth. Rarely opened to the public, this is a unique opportunity to play on one of Perthshire's famous 'James Baird' courses which include Gleneagles courses. Tickets include a bacon roll and hot drink to start and a bowl of soup and beer at the end. £15 a head.

Limited numbers so please call Anthea Coulter to book place on 633887/449227.



Dare to Dig!

If you are a new gardener or want to upgrade your skills then we are offering the opportunity to join a new range of gardening workshops to be held at our little gem of a garden centre on the Ladeside from Saturday 2nd April.

Kathy Miller, our resident horticulture expert will be taking

gardeners through the ropes of a full range of gardening subject on the first Saturday morning of every month starting with veg growing at 10.30am.

A donation of £5 for the session will include a hot drink and traybake and the chance to meet other keen new gardeners.

For more details please look on the website www.checkin-giraffe.uk and call to book a place on 01738 633887.